

ALADDIN

T H E A T E R

VENUE & TECH INFO

Venue Office & Shipping Address:
3116 SE 11th Ave | Portland, Oregon 97202

www.aladdin-theater.com | 503.234.9694

VENUE CONTACTS

Arta Powers, Production Director
e: arta@truestwestpresents.com

Lee Perry, General Manager
e: lee@truestwestpresents.com



LOAD-IN/PARKING

Occurs along the curb at [3116 SE 11th Ave](#). Please note that 11th Ave is a one-way street heading South. Please confirm your parking needs with your production manager during the advance process, and they will reserve the appropriate amount of space for you. Load-in is up one curb (curb ramp available) for short, flat push through stage doors and directly onto stage left. No stairs or elevators.

DRESSING ROOMS

Dressing rooms are located behind the stage and up one flight of stairs. There is one larger private room & one small private room, with an open kitchenette / greenroom in-between. There is one private restroom with one shower. NO laundry facilities on site. Map of green room on last page of tech pack.

WIFI

Backstage Network Name: Aladdin Visiting Production / **Password: iloveascap**
Merchandise Lobby Network Name: Lamp / **Password: Geniezzrus7!**

MERCHANDISE

The merch area is located in the rear of the venue's attached lounge space. This area is high traffic, well lit with grids, power and room for up to (3) 6' tables. Please use the address below and notify production in advance if you will be shipping merchandise to the theater.

Aladdin Theater/ Your Artist Name, 3017 SE Milwaukie Ave, Portland, OR 97202.

*** Please note: The Aladdin has limited storage space & is not suitable for large drop shipments. ***

BACKLINE

Aside from guitar stands, keyboard stands, rugs, etc., we do not have any backline in-house. Local backline rentals can be arranged through SIR Portland, per advance.

RISERS

The venue has (1) 8'x8' static riser deck with 12" legs and skirting available in house.

SOCIAL MEDIA

Instagram: [@AladdinTheater](#) | Facebook: [@AladdinTheaterPDX](#) | Twitter: [@AladdinTheater](#)



AUDIO SPECIFICATIONS

Updated November 9, 2021

AVID VENUE SC48 FRONT OF HOUSE CONSOLE

48 - Channel Digital Mixer w/ 48 Analog Mic/Line Inputs and 16 Outputs
Ashley Protea 4.8SP system processor

***MIDAS M32 MONITOR CONSOLE AVAILABLE UPON REQUEST**

32 Channels and 16 Mix Buses

*additional charges may apply

MAIN SPEAKERS & AMPLIFIERS

(4) EAW KF850 tops (2 per side, ground stacked)
(4) EAW SB 1000 subs (2 per side, ground stacked)
(1) QSC 3.4 (Highs)
(3) QSC 6.0II (Mids, Lows, Subs)
(2) JF-100s Front Fills (1 per side)
(1) QSC PLX1602, located on stage in the amp rack
(1) Ashley Protea 4.8SP, located on stage in the amp rack

MONITOR SPEAKERS & AMPLIFIERS

(8) EAW MicroWedge 12
(1) EAW Sb250zR Drum Sub
(4) QSC PL340 Amplifier

HOUSE SNAKE SYSTEM

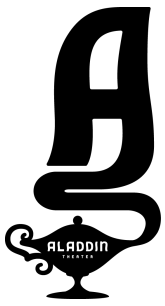
48 Channel Splitter with hardtail Split to FOH
Rack and Multi-pin disconnect to Monitor console
Snake Interface: 2 x Cat5 + 12pr Analog XLR
(4) 12 channel sub-snakes for stage

HOUSE MICROPHONES & DI'S

Shure: (6) Beta 58, (6) SM58, (10) SM57, (1) Beta 52, (1) Beta 91, (4) KSM 137, (3) Beta 98
Audix: (2) D6s, (2) D2s, (2) D4s, (3) ADX 51s, (3) VX5s, (5) OM3s
Lewitt: (1) DTP 340 REX, (3) DTP 340 TTs, (1) MTP 440 DM
Wireless: (2) Shure SLX4 with 58 Capsules *additional charges may apply
DIs: (8) Radial Pro - Passive DI, (2) Radial Pro - Stereo Passive DI
Misc: Mic Stands, XLR cabling, AC stage power

PRODUCTION POWER

Audio (4x) 20 amp circuits SL & (4x) 20amp circuits SR
LX (6x) 20amps
Edison connections only



LIGHTING EQUIPMENT LIST

Updated December 01, 2023

CONTROL

Grand MA2 on PC Command Wing

House lighting control position is located in booth above the balcony.

*Control can be moved to main floor upon request

[*subject to advance & capacity limitations](#)

DATA

(1x) - Guest cat5 line at FOH (copper lines are also available through FOH node)

FIXTURES

DOWN STAGE TRUSS

(5) Rogue R2X Washes & (2) Mac Quantums

MID STAGE TRUSS

(4) Rogue R1 Beamwashes & (6) Mac Quantums & (1) 20" motorized mirror ball

UP STAGE TRUSS

(4) Rogue R1 Beamwashes & (6) Mac Quantums

HAZER

(1) Antari HZ-500 Hazer

****NO S&R house****

SPOT LIGHTS

(2) Altman Comets, located in the far House Left / House Right balcony corners at railing. A center spot position not available due to balcony seating layout.

LIGHTING PATCH LIST

[On next page](#)

***VIDEO PROJECTION**

House Projector is an Epson EB-PU1008B located in the lighting booth above the balcony. The house has 2 screen, a motorized Dalite 146" x 260" flown at the stage's proscenium line (approx 11' from downstage center) the other is a free standing Draper screen 102"x192" (Matte black frame, no dress kit) HDMI connection to projector is available at the FOH mix position or on stage per advance. Blu-ray/DVD player also available in house.

[*Additional charges may apply](#)



Lighting Patch List

All addresses are sequential and as you see them from left to right

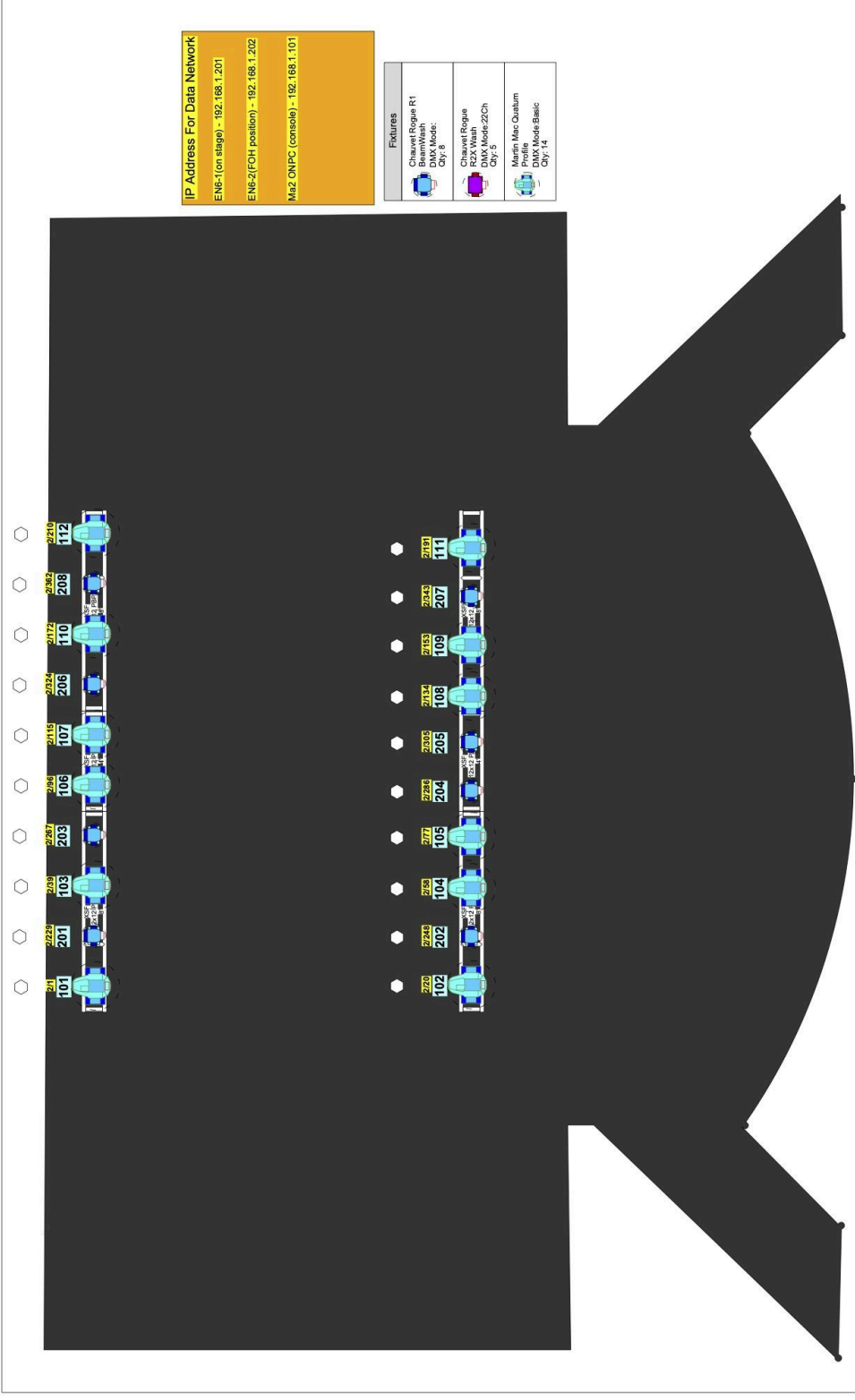
For example, the first Quantum is US at 1, and the second is MS at 20

Stage: Universe 2

<u>Mac Quantum</u> (Basic Mode)	12	1, 20, 39, 58, 77, 96, 115, 134, 153, 172
<u>Rogue R1 BeamWash</u> (19ch Mode)	8	191, 210, 229, 248, 267, 286, 305, 324
<u>BaseHaze</u>	1	420

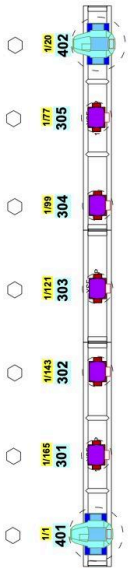
"FOH" Truss: Universe 1

<u>Mac Quantum</u> (Basic Mode)	2	1, 20
<u>Rogue R2X Wash</u> (22ch Mode)	5	77, 99, 121, 143, 165



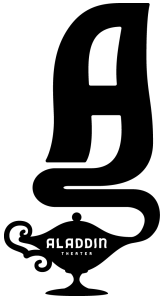
IP Address For Data Network
 EN6-1 (on stage) - 192.168.1.201
 EN6-2 (FOH position) - 192.168.1.202
 Ma2 ONPC (console) - 192.168.1.101

Fixtures	
	Chauvet Rogue R1 DMX Mode: Qty: 8
	Chauvet Rogue R2X Wash DMX Mode: 2Ch Qty: 8
	Martin Mac Quantum DMX Mode: Basic Qty: 14

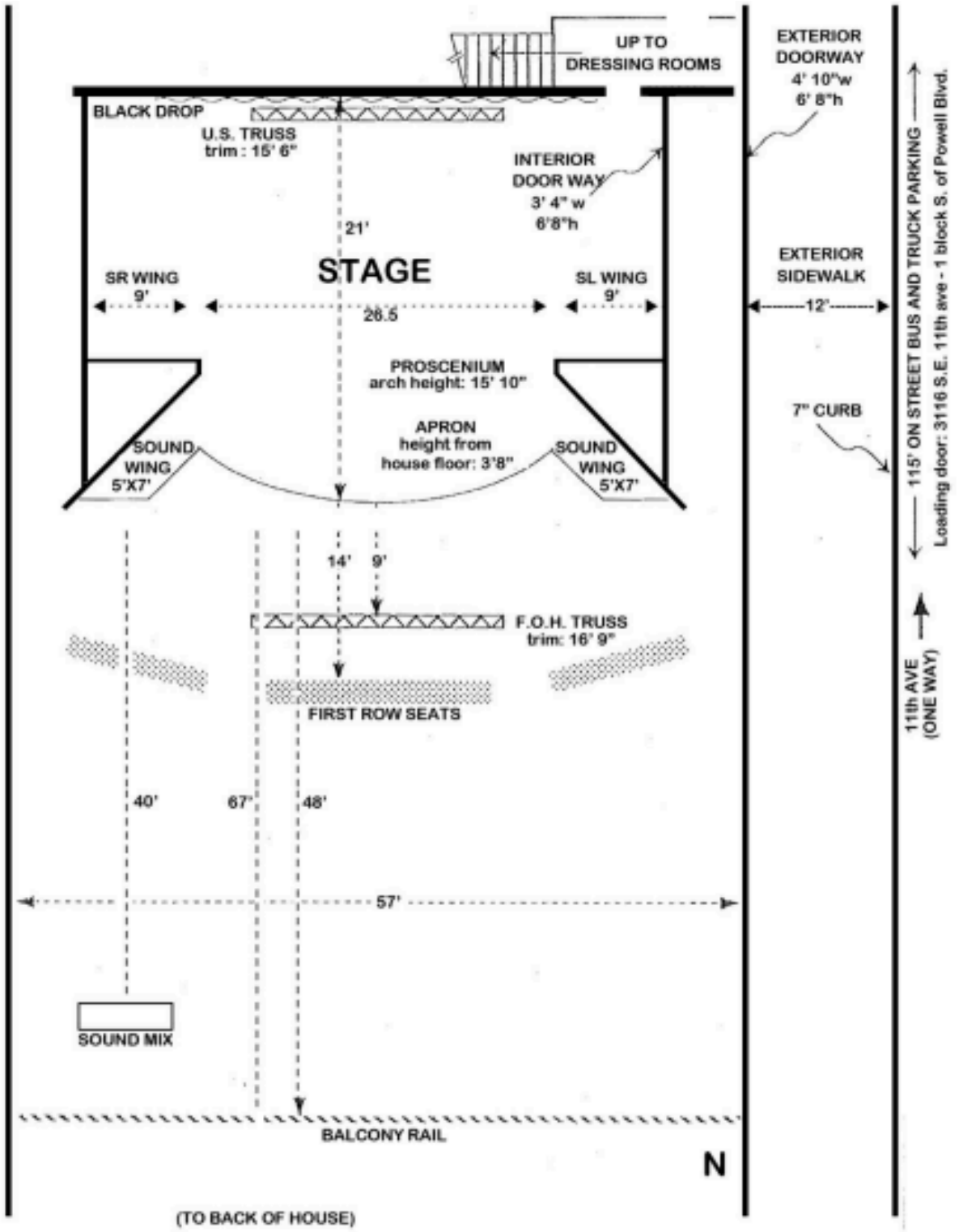


Aladdin Theatre 3116 se 11th, Portland, OR 97202	Aladdin House lighting Plot		Lighting Plot	
	Production Manager: Aria Powers Aria@luewestpresents.com		CAD FILE: Aladdin v9 1.30.25.vwe SCALE: 3/8" = 1'-0"	DATE: 1/29/2025 DRAWN BY: Ian Straub





STAGE SPECIFICATIONS & LAYOUT



IN THE AREA

CAFÉS & RESTAURANTS

[ROSE CITY COFFEE](#)

Coffee, pastries, sandwiches
3370 SE Milwaukie Ave
4 minute walk South
Open daily until 11pm

[BOTTO'S BBQ](#)

Craft BBQ
3120 SE Milwaukie Ave
Across street from theater
Closed Mon/Tues

[THE CHOMP](#)

Thai Food
3200 SE Milwaukie Ave
Kitty corner South from theater
Closed Sunday

[KNOW THY FOOD](#)

Café & Market
3434 SE Milwaukie
5 minute walk South
Open TH-M 8-6, T-W 8-7

[EDELWEISS SAUSAGE & DELI](#)

German deli & store
3119 SE 12TH AVE
1 minute walk West
Open 9-6, Closed Sunday

CONVENIENCE STORES

AM/PM

Gas Station/Convenience Store
1110 SE Powell Blvd
Across street from theater
Open 24 Hours

BOB'S HANDY PANTRY

3354 SE Milwaukie Ave
3 minute walk South
Open daily until 10pm

MUSIC STORES

[TRADE UP MUSIC](#)

Local music store
4701 SE Division St
8 minute drive
Open 11am-6pm
take Powell Blvd to avoid train tracks

[ARTICHOKE COMMUNITY MUSIC](#)

Local acoustic guitar shop
2007 SE Powell Blvd
4 minute drive / 12 minute walk
Open Th 12-6, F 12-5, Sat-Sun 10-5

REHEARSAL SPACE

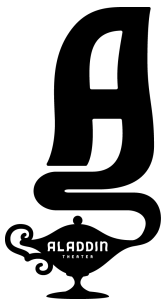
[PUDDLETOWN STUDIOS](#)

Studios & Storage
1430 SE Powell Blvd
4 minute walk / 1 minute drive
Open by reservation - 24 hour access

URGENT CARE

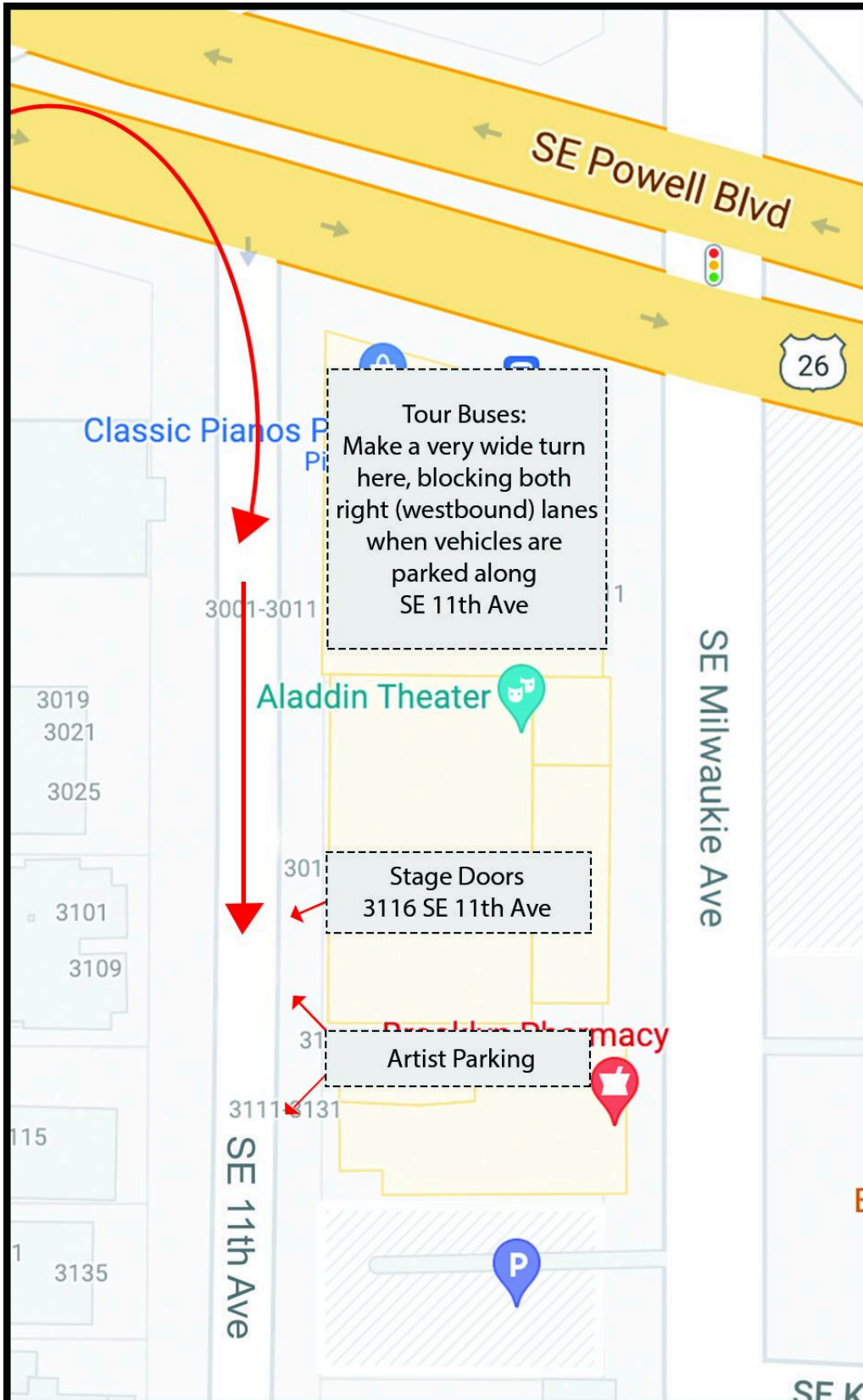
[ZOOM+Care](#)

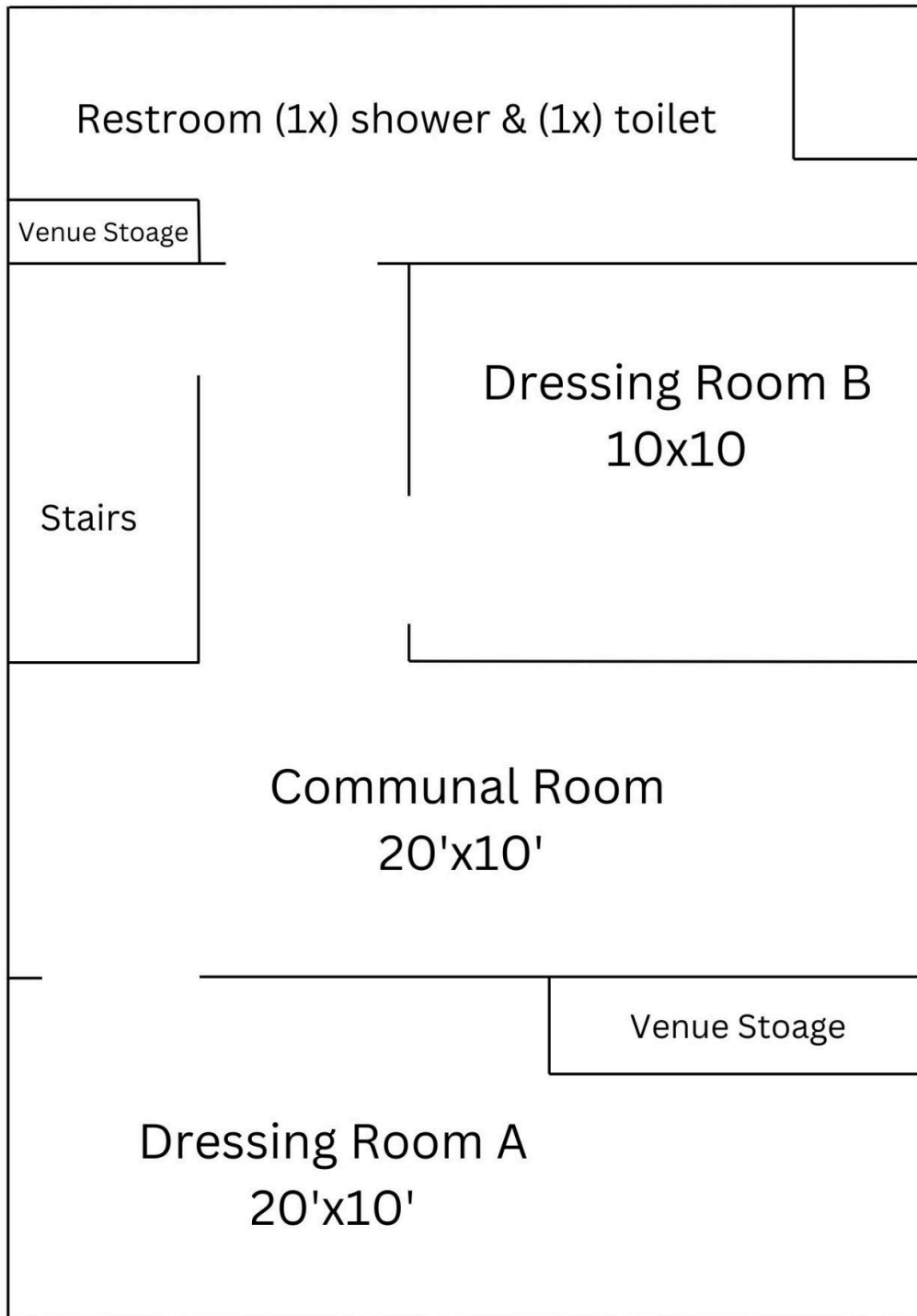
31310 SE Division St
Open M-F 8-6, Sat-Sun 9-6



PARKING INFORMATION

[3116 SE 11th Ave | Portland, OR 97202](https://www.aladdintheater.com)





Green room layout, note the green rooms are only accessible via stairs please let us know if you will need alternative accommodations.